

The background of the entire page is a repeating pattern of HKIAIR suspension components, specifically coil springs and shock absorbers, rendered in a light gray line-art style. The components are arranged in a grid-like fashion, creating a dense, textured background.

HKIAIR

SUSPENSION

CONGRATULATIONS!

You have just purchased a product with international quality. It will allow you to have control of the air suspension of your vehicle in your hands, simply, safely and practically.

This manual will provide you with all the information that is important and will help you with all the installation and configuration of your product.

THE MAIN DIFFERENTIALS OF THIS PRODUCT ARE:

- Electronic Management System exclusively developed for the accurate and safe management of the air suspension.
 - Metal casing, strong and robust.
 - 3 custom height levels + 1 lower height + 1 maximum height
-

However, if you have any difficulties during the installation process or set up, we are here and ready to assist you in anything you may need.



TERMS AND CONDITIONS

HKI AIR SUSPENSION warrants the product against any imperfections in material and manufacturing issues and is limited to the exchange of part of the kit and / or components of products of the kit in the terms detailed below by examination carried out by the our own specialists.

If the product is found to be defective in these terms above, HKI Air Suspension may choose to replace the damaged product with a new one.

Any and all notes from the buyer regarding any issues observed in the product will only be taken in consideration if:

- The buyer presents the oficial sales tax document;
- A technical analysis of the product to verify the claimed issue. This analysis is performed directly by the company or distributors previously authorized to provide customer support. This analysis can be conditioned to the payment of a postage fee if you need to ship the product to the factory

Situations not covered by this Warranty

The warranty does not apply to products that have been installed incorrectly or have not been maintained in accordance with installation instructions or exposure to adverse and unforeseen conditions;

Damage caused during transportation or installation of the product, when it has not been carried out by HKI Air Suspension or by professionals authorized by HKI Air Suspension;

Misuse, undue stress, or any use other than that proposed in the product manual;

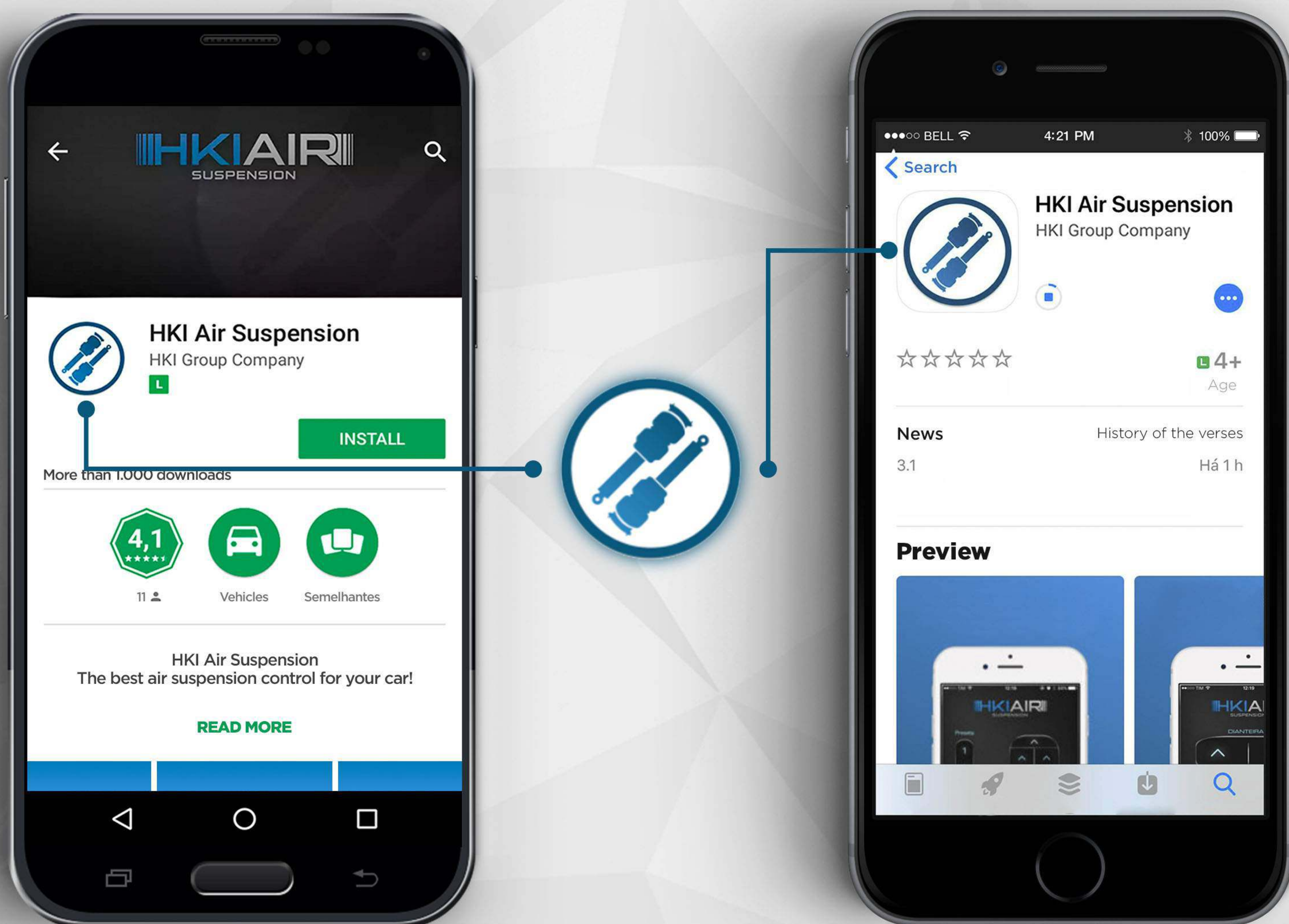
Problems caused by assembly in disagreement with the instruction manual, or related to adaptations and / or changes made to the product;

Mistreatment, neglect and / or maintenance not in accordance with the instructions in this manual;



INTRODUCTION OF THE HKI AIR SUSPENSION APP BT-8 / BT-8F / BT-8FP /

Before you start the installation of the product, it is very important that you download the HKI Air Suspension APP in a portable device (Cellphone, Tablet and etc). To do this, search for HKI Air Suspension on Google Play (Android) or App Store (iOS) as shown in the image below:



One of the great advantages of this app is that it has been optimized to use less storage space in you device

SEARCHING FOR A DEVICE:

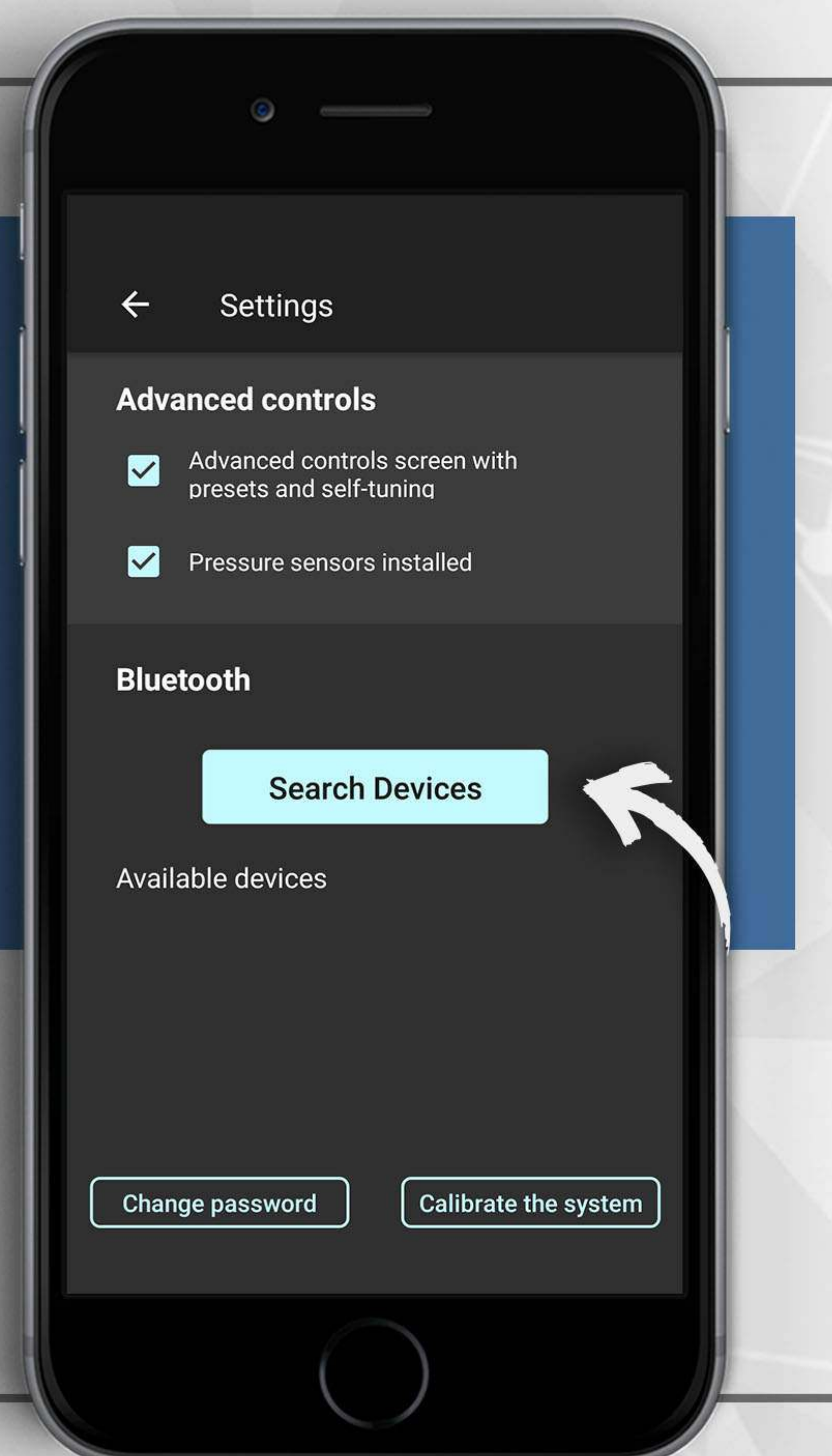
The setup and operation of the BT-8, BT-8F and/or BT-8FP are done by the HKI AIR SUSPENSION App on the mobile device.

Activate Bluetooth on the device, open the APP and select the gear on the lower left side of the screen to gain access to the Config Panel.



Select the button “Search for Devices” that is located in the middle of the screen. The device will connect to the ECU BT-8 and ask for a password.

REMINDER: For this to happen, your device must be within a 3 meters (10ft) reach from the Electronic Management System.

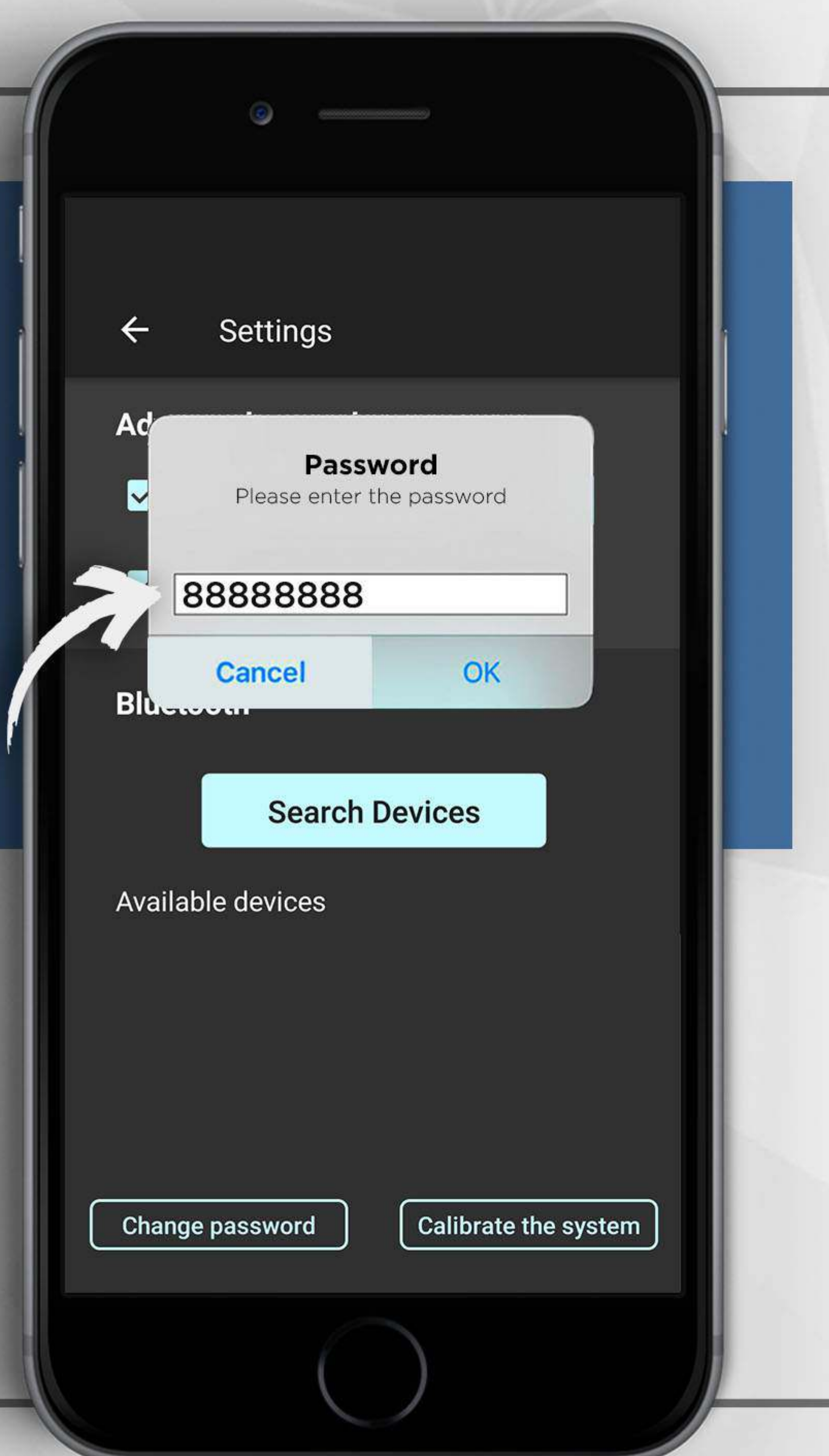


PAIRING YOUR DEVICE

Select the device from the "available devices" list and insert the pre-defined password : 88888888 (Eight times the number 8). After this, the system will automatically connect to the device with no need to re-do these steps again in the future, and is now ready to control your air suspension system.

For the first time using your air suspension system, it is very important that the air tank is completely filled, the vehicle is sitting on the ground, and on a flat surface. After all the previous steps are taken, simply select the **"Calibrate"** button, and the system will automatically make all the necessary adjustments to recognize the sensors.

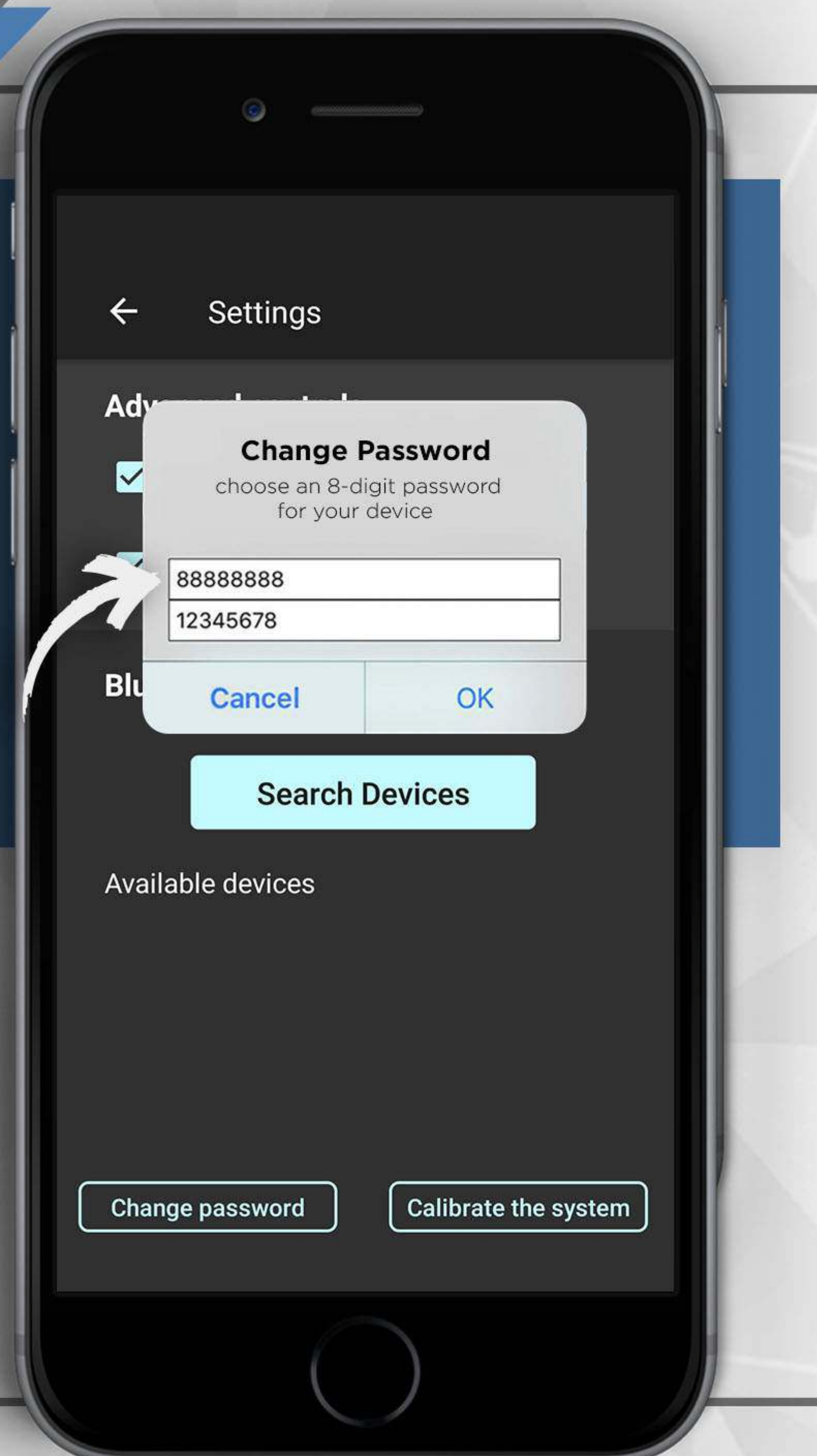
Information applies to systems with with position and/or pressure sensors. (BT-8F | BT-8FP)



CHANGING THE PASSWORD

The pre-defined password must be changed to ensure the security of the system, to do this simply press the button "Change Password" located on the "Config" panel of the APP. Insert the current password first, and next insert the new password.

In case you forget the password, press the reset button located next to the connectors on your ECU for 10 seconds, and re-do the steps to pair the bluetooth device, using the pre-defined password (88888888).



BASIC AND ADVANCED CONTROLS

On the HKI AIR SUSPENSION APP you will find basic and advanced controls of the air suspension system. If you purchased the BT-8 system, you may use both basic and advanced layouts of the controls.

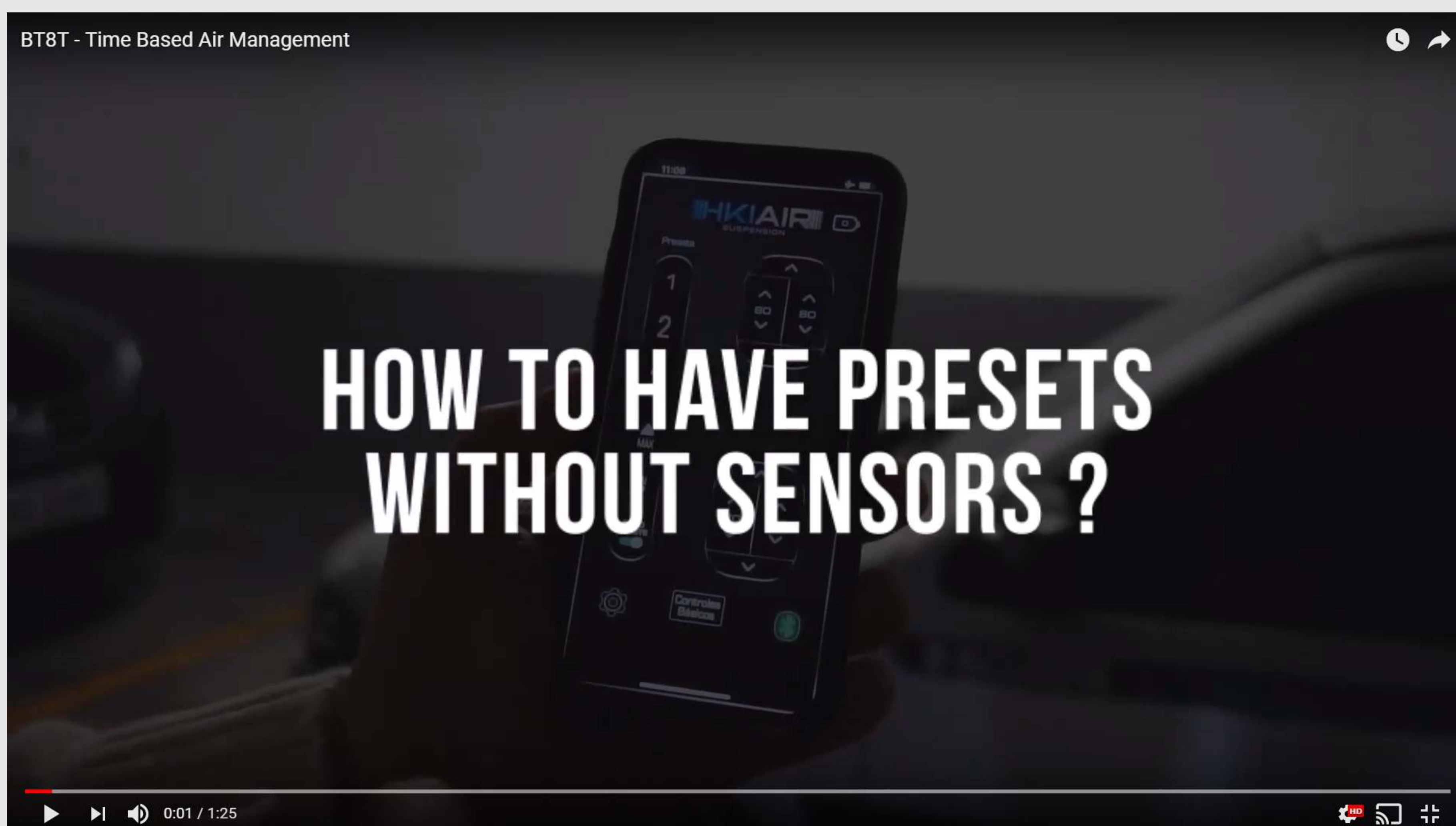
BASIC CONTROLS

In the basic control layout, it is possible to control the raising and lowering of the front, rear and full suspension, by pressing the control button to the desired height. In the advanced controls layout it will be possible to independently control the wheel-to-wheel raising and lowering, as well as the front and rear suspension assembly, in addition, if you have the BT-8F system, enable the functions of air suspension management and if you have the pressure sensors (BT-8FP) and also activate the pressure reading, both functions need to be active at the Config Panel (gear).

ADVANCED CONTROLS

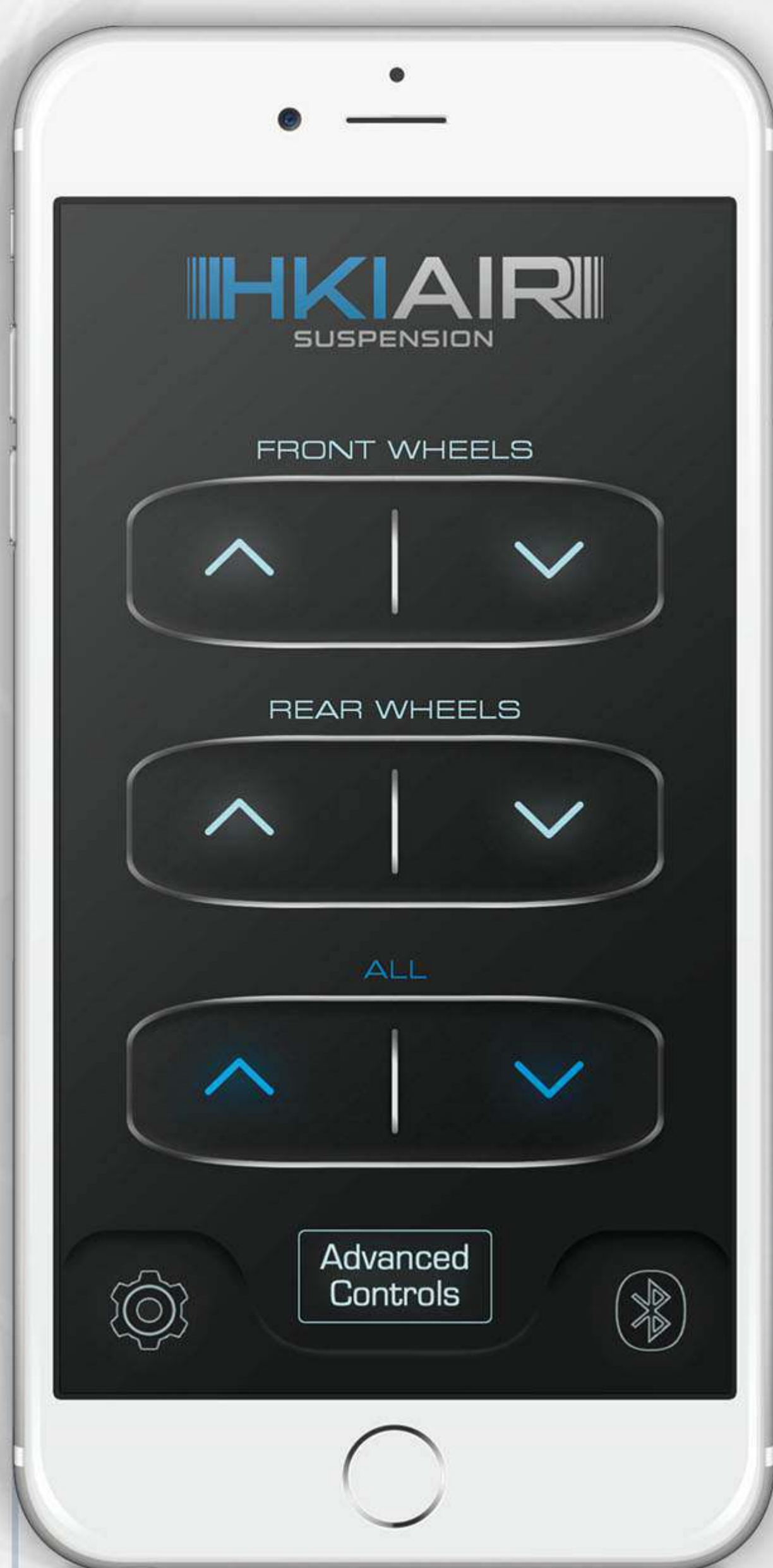
In the advanced controls you can enable or disable the advanced controls that are user-defined heights and the auto-adjustment function.

You will also have the option of activating the pressure sensors function, showing the pressures of the 4 air springs/air bags, and the pressure of the air tank in real time directly on the screen of your mobile device.



BASIC AND ADVANCED CONTROLS

On the HKI AIR SUSPENSION APP you will find basic and advanced controls of the air suspension system. If you purchased the BT-8 system, you may use both basic and advanced layouts of the controls.



ELECTRICAL AND PNEUMATIC MANIFOLD SYSTEM

Electrical and pneumatic connection of the manifold.

HKI management requires that the air suspension system use 8 valves to function perfectly.



MANIFOLD V8

Quick Guide BT8

Electrical and pneumatic layout

PNEUMATIC

AIR PRESSURE TO BAGS

AIR PRESSURE FROM TANK

AIR PRESSURE EXHAUST

AIR PRESSURE TO GAUGES/SENSORS

ELECTRIC

RED WIRE

+ 12v Constant

BLACK WIRE

- Ground

PIN 1

Down Left Rear Valve

PIN 2

UP Left Rear Valve

PIN 3

Down Right Rear Valve

PIN 4

UP Right Rear Valve

PIN 5

Down Left Front Valve

PIN 6

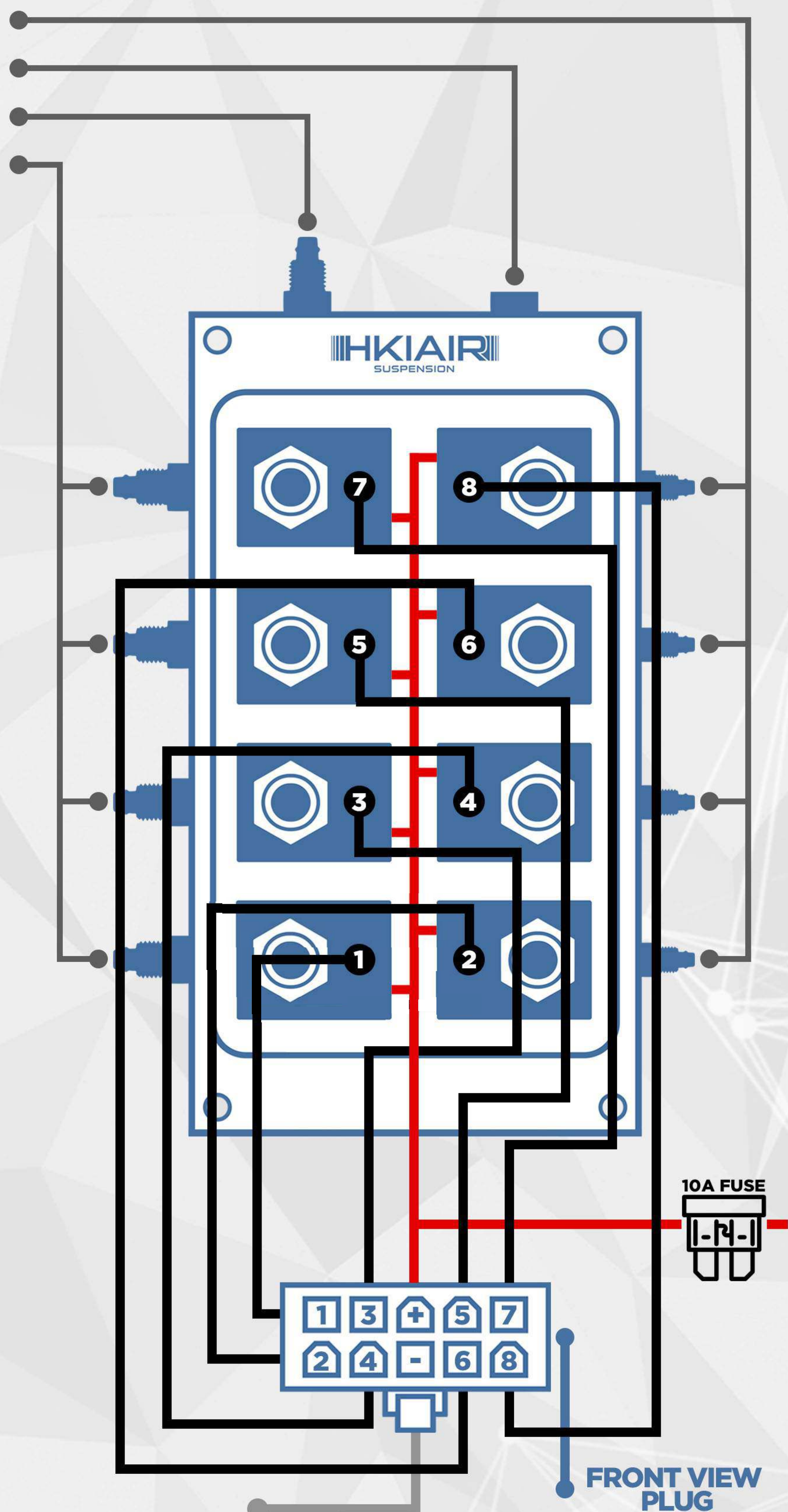
UP Left Front Valve

PIN 7

Down Right Front Valve

PIN 8

UP Right Front Valve



THANK YOU FOR BUYING OUR PRODUCTS

HKIAIR
SUSPENSION